

PLATING SPECIFICATIONS

BODY: C - BLACK CHROME N - NICKEL **PIN/CONTACT:** G - GOLD **DIELECTRIC:** D - DELRIN T - TEFLON



FIG. 1
RFE-6100



FIG. 2
RFE-6101



FIG. 3
RFE-6102



FIG. 4
RFE-6103



FIG. 5
RFE-6104



FIG. 6
RFE-6105



FIG. 7
RFE-6107

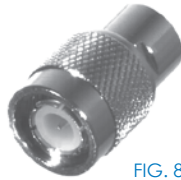


FIG. 8
RFE-6108

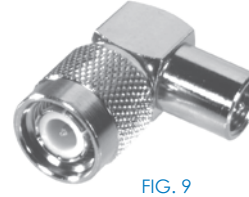


FIG. 9
RFE-6109



FIG. 10
RFE-6110



FIG. 11
RFE-6111



FIG. 12
RFE-6112



FIG. 13
RFE-6150



FIG. 14
RFE-6151



FIG. 15
RFE-6152



FIG. 16
RFE-6153



FIG. 17
RFE-6155



FIG. 18
RFT-1240



FIG. 19
RFT-1240-1

PHOTOS FOR REFERENCE ONLY, SHOWN AT 100% ACTUAL SIZE.

PART #	FIG	DESCRIPTION	NOTES	REPLACES OR EQUIVALENT TO	PLATING		
					BDY	P/C	DIE
RFE-6100	1	ADAPTER	FME MALE TO FME MALE		N	G	T
RFE-6101	2	ADAPTER	FME MALE TO BNC FEMALE		N	G	T
RFE-6102	3	ADAPTER	FME MALE TO BNC MALE		N	G	T
RFE-6103	4	RIGHT ANGLE ADAPTER	FME MALE TO BNC MALE		N	G	T
RFE-6104	5	ADAPTER	FME MALE TO MINI UHF FEMALE		N	G	D
RFE-6105	6	ADAPTER	FME MALE TO MINI UHF MALE		N	G	D
RFE-6107	7	ADAPTER	FME MALE TO N MALE		N	G	T
RFE-6108	8	ADAPTER	FME MALE TO TNC MALE		N	G	T
RFE-6109	9	RIGHT ANGLE ADAPTER	FME MALE TO TNC MALE		N	G	T
RFE-6110	10	ADAPTER	FME MALE TO SMA FEMALE		N	G	T
RFE-6111	11	ADAPTER	FME MALE TO SMA MALE		N	G	T
RFE-6112	12	ADAPTER	FME MALE TO UHF MALE		N	G	T
RFE-6150	13	ADAPTER	FME FEMALE TO BNC FEMALE		N	G	T
RFE-6151	14	ADAPTER	FME FEMALE TO BNC MALE		N	G	T
RFE-6152	15	ADAPTER	FME FEMALE TO MINI UHF FEMALE		N	G	T
RFE-6153	16	ADAPTER	FME FEMALE TO MINI UHF MALE		N	G	T
RFE-6155	17	ADAPTER	FME FEMALE TO TNC MALE		N	G	T
RFT-1240	18	ADAPTER	TNC FEMALE TO FME FEMALE (EURO NIPPLE)	USE WITH TECHNPHONE CELLULAR	N	G	T
RFT-1240-1	19	ADAPTER	TNC FEM TO FME FEMALE (EURO NIPPLE) BLACK	USE WITH TECHNPHONE CELLULAR	C	G	T